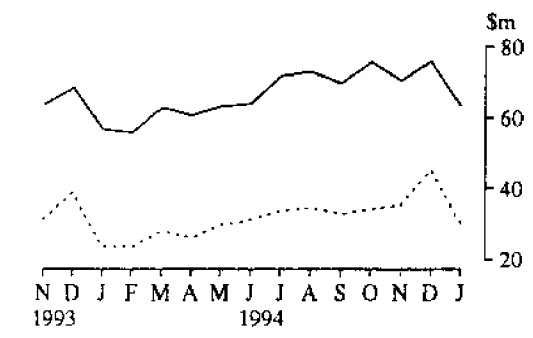


CATALOGUE NUMBER 1307.7  
EMBARGOED UNTIL 11:30 AM TUE 21 MARCH 1995

**NORTHERN TERRITORY BUSINESS INDICATORS, MARCH 1995**

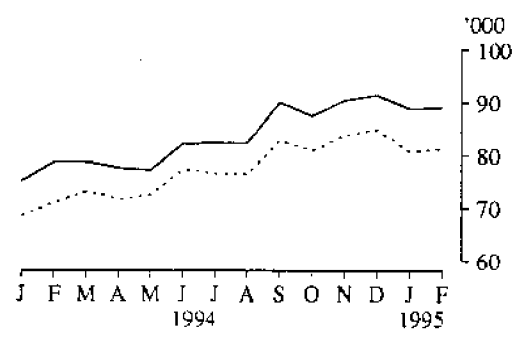
**SUMMARY OF RESULTS**

**TURNOVER OF RETAIL ESTABLISHMENTS**



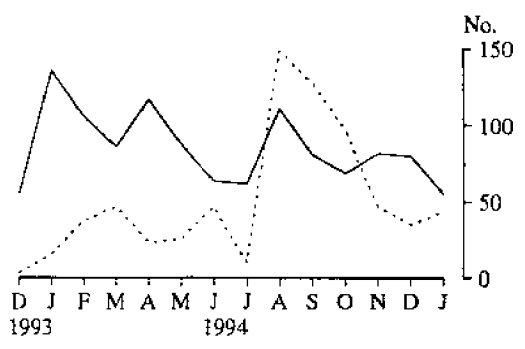
— Food retailing, hospitality and services  
..... All others

**LABOUR FORCE**



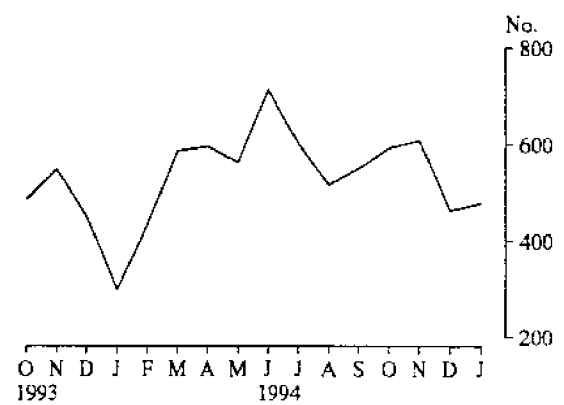
— Total labour force  
..... Employed persons

**NEW DWELLING UNITS APPROVED**



— Houses  
..... Other dwell

**NEW MOTOR VEHICLE REGISTRATIONS**



**PHONE INQUIRIES** • about these and other ABS statistics and services — contact **Information Services** on Darwin (089) 432111 or any other ABS office.  
**MAIL INQUIRIES** • write to **Information Services**, ABS, GPO Box 3796, Darwin 0801, or any ABS State office.

Figures have been taken from a variety of ABS publications. Copies may be obtained from Information Services. Some of the figures shown are preliminary, some final and some are revisions of previously published figures.

**Bob Harrison**  
Statistician, Northern Territory

## NORTHERN TERRITORY BUSINESS INDICATORS, MARCH 1995

Indicator	Unit	Northern Territory				Australia			
		Latest period	Latest figure	Change from previous period (%)	Change from same period previous year (%)	Latest figure	Change from previous period (%)	Change from same period previous year (%)	
<b>LABOUR FORCE</b>									
Employed	'000	Feb-95	81.2	0.6	14.5	8,090.1	1.7	4.4	
Unemployed	'000	Feb-95	7.8	-3.7	-	886.2	3.8	-12.0	
Unemployment rate (a)	%	Feb-95	8.7	-0.4	-1.2	9.9	0.2	-1.6	
Participation rate (a)	%	Feb-95	72.9	-	7.4	63.9	1.2	0.8	
<b>AVERAGE WEEKLY EARNINGS</b>									
Males	\$	Nov-94	656.80	0.1	-1.1	642.90	1.3	3.9	
Females	\$	Nov-94	455.10	-0.1	4.1	425.00	0.9	4.0	
Total persons	\$	Nov-94	562.30	0.2	0.7	541.50	0.8	3.8	
<b>RETAIL TURNOVER</b>									
Food & Hospitality & Services	\$m	Jan-95	63.3	-16.6	11.4	5,308.8	-14.5	10.2	
All other stores	\$m	Jan-95	30.2	-33.3	28.5	3,653.2	-40.6	5.1	
Total	\$m	Jan-95	93.5	-22.9	16.4	8,962.0	-27.5	8.1	
<b>PRICES</b>									
Consumer Price Index									
Food	(1989-90=100.0)	Dec qtr-94	112.8	-	0.2	110.9	0.5	1.3	
Housing	(1989-90=100.0)	Dec qtr-94	107.7	2.3	4.6	97.5	2.7	4.2	
Transport	(1989-90=100.0)	Dec qtr-94	114.5	-0.3	1.0	116.8	-0.2	2.9	
All groups	(1989-90=100.0)	Dec qtr-94	113.7	0.6	1.8	112.8	0.8	2.6	
Average Retail Prices									
Beer, draught, 285ml glass	cents	Sep qtr-94	203	-	3.6	..	..	..	
Bread, white, 680g	cents	Sep qtr-94	170	1.2	1.2	..	..	..	
Milk, carton, 1 litre	cents	Sep qtr-94	94	-	-	..	..	..	
Petrol, leaded, 1 litre	cents	Sep qtr-94	74.8	1.5	0.8	..	..	..	
Steak, rump, 1 kg	cents	Sep qtr-94	1,287	3.3	5.7	..	..	..	
<b>INDUSTRIAL DISPUTES</b> no. of days lost									
OCCURED	per '000 employees	Year ended	Nov-94	124	2.5	235.1	81	17.4	-27.7
<b>BUILDING</b>									
Approvals									
New houses	no.	Jan-95	55	-31.3	-59.6	7,724	-9.7	-9.6	
Other residential	no.	Jan-95	44	25.7	175.0	3,463	-18.7	-18.1	
Total new residential building	\$m	Jan-95	9.7	-11.5	-52.4	1,018.5	-17.5	-6.8	
Total non-residential building	\$m	Jan-95	17.9	156.7	217.1	631.5	12.8	11.6	
Value of all building approved	\$m	Jan-95	29.0	44.8	8.3	1,795.9	-7.7	-0.5	
Commencements - New Houses									
Value of total work done during period (d)	\$m	Sep qtr-94	75.5	-15.2	0.3	7,165.5	4.2	10.8	
<b>HOUSING FINANCE</b>									
Secured commitments to individuals									
For construction of dwellings	\$m	Jan-95	3.4	-35.9	6.3	428.9	-24.7	-16.0	
For purchase of new dwellings	\$m	Jan-95	1.7	88.9	41.7	150.7	-17.4	-5.2	
For purchase of established dwellings (b)	\$m	Jan-95	16.5	-10.3	4.4	1,927.3	-25.0	-19.8	
<b>NEW MOTOR VEHICLE REGISTRATIONS</b>									
Motor vehicles	no.	Jan-95	478	3.2	59.9	42,947	-18.7	17.1	
Motor cycles	no.	Jan-95	18	-37.9	20.0	1,854	-2.0	25.2	
<b>OVERSEAS TRADE</b>									
Imports	\$m	Jan-95	10.2	-27.8	-45.4	6,100.8	4.6	25.5	
Exports (c)	\$m	Jan-95	72.5	-12.1	29.9	4,687.3	-11.0	3.1	
<b>TOURIST ACCOMMODATION</b>									
Hotel, Motels & Guest Houses									
Room occupancy rate (a)	%	Sep qtr-94	71.0	13.8	3.6	58.4	4.3	3.9	
Bed occupancy rate (a)	%	Sep qtr-94	43.2	9.4	2.0	35.9	3.3	2.4	
Takings from accommodation	\$m	Sep qtr-94	29.4	32.4	10.5	759.9	12.7	13.1	
<b>POPULATION</b>									
Estimated Resident Population	'000	Jun qtr-94p	171.1	0.2	1.1	17,843.3	0.2	1.1	

Source: ABS Catalogue Nos: 3101.0, 5609.0, 5461.0, 6202.0, 6302.0, 6321.0, 6401.0, 6403.0, 8361.0, 8501.0, 8635.0, 8635.7, 8731.0, 8731.7, 8752.0, 8752.7, 9301.0, 9303.0

Symbols used in this publication: .. not applicable, - nil or rounded to zero, n.a. not available, r revised, (a) change shown in terms of percentage points, (b) excludes refinancing, (c) excludes re-exports (d) includes Residential and Non-residential building.

